

## VALUE CORE BUILDING INSTALLATION PROCEDURE

Thank you for choosing a Panel-Built Building. Every effort has been made in the design and manufacture of each Panel-Built Building to make installation as worry free as possible.

This procedure is intended for individuals with a good working knowledge of basic construction techniques.



**Technical Assistance: 1-800-636-3873**

Panel Built Buildings  
P.O. Box 2658  
Blairsville, Georgia 30512  
Phone 706-745-6540  
Fax 706-745-1450



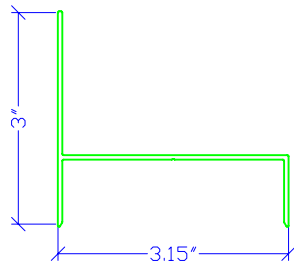
Proud Manufacturers of: Mezzanines, In-plants, Exterior Buildings, and other Custom Applications

Check your shipping package prior to starting to ensure that all parts and components have been included as listed on the packing list.

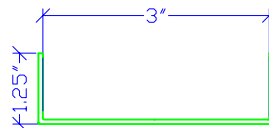
Take a moment to read through the instructions prior to starting and study the parts and components and how they will work with each other.

These few moments will save you time later.

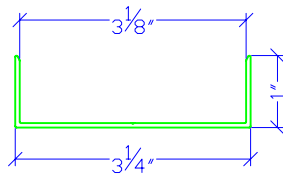
**PARTS I.D. PAGE**



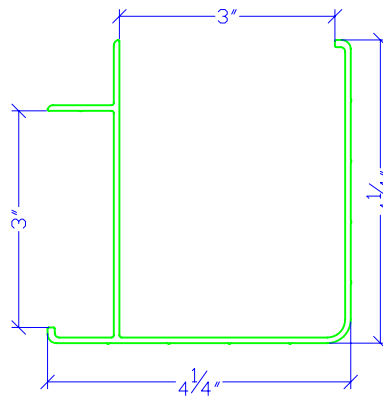
Aluminum Top Channel



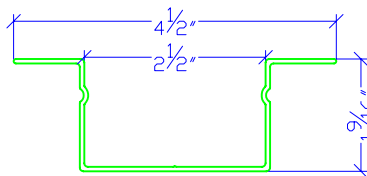
Wall Start



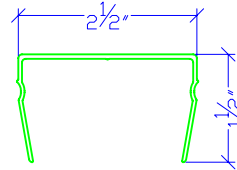
Base Channel  
Top Channel  
Wall Start



Corner Post



Binder Post Hat Channel



Binder Post Snap-In Cover



#12 x 1/2" HEX HEAD TEK SELF DRILLING SCREW



#10 x 1-1/2" PAN HEAD TEK SELF DRILLING SCREW



1/4" x 1-1/2" NYLON ANCHOR FOR CONCRETE



#12 x 1-1/4" HEX HEAD SELF DRILLING SCREW



1-1/2" GRABBER SCREWS



#10 x 3/4" PHILLIPS PAN HEAD SCREWS FOR WOOD

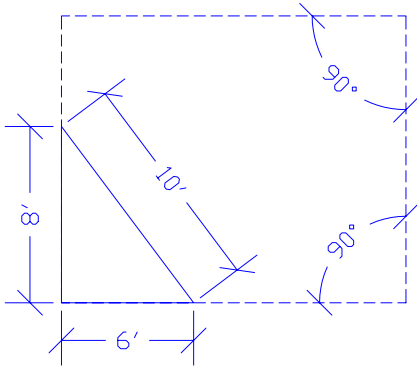
Before you start, you will need:

- Level
- Slotted Screwdriver
- Phillips Screwdriver
- Claw Hammer
- Hack Saw (with extra blades)
- Pliers
- Vise Grips
- Tape Measure

- Aviation Snips
- Chalk Line
- Putty Knives
- Combination Square
- Screw Gun
- Drill Motor & Bits
- Rubber/Sand Mallet
- Chop Saw (Not Required But Recommended)

## Building Layout

Using a chalk line, lay out interior dimensions of the building (see chart) using 90 deg. angles on all corners.



Note: One way to be assured of 90 deg. corners is by using the 3, 4, 5 triangle technique as shown.

## SAFETY FIRST!

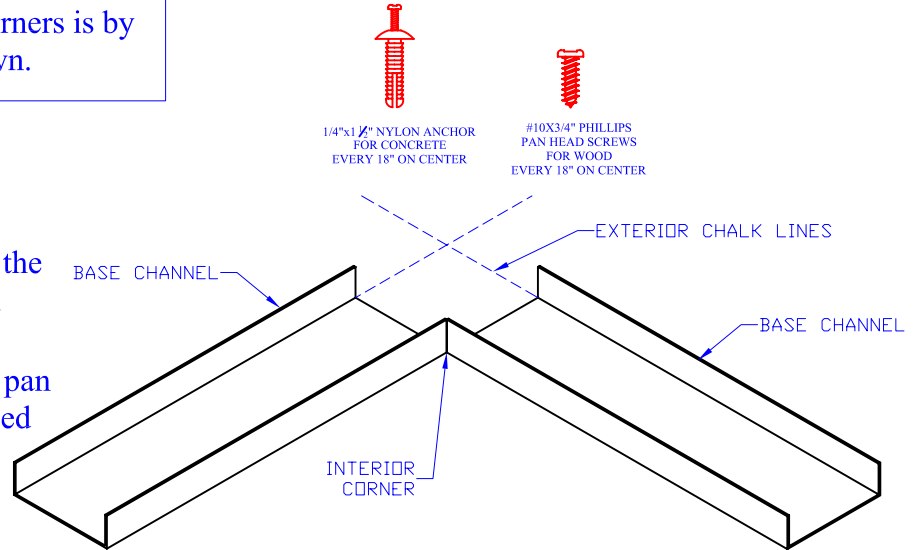
Always wear protective headgear, gloves, and OSHA approved safety glasses.

## KEEP IT SQUARE!

Technical Assistance  
1-800-636-3873

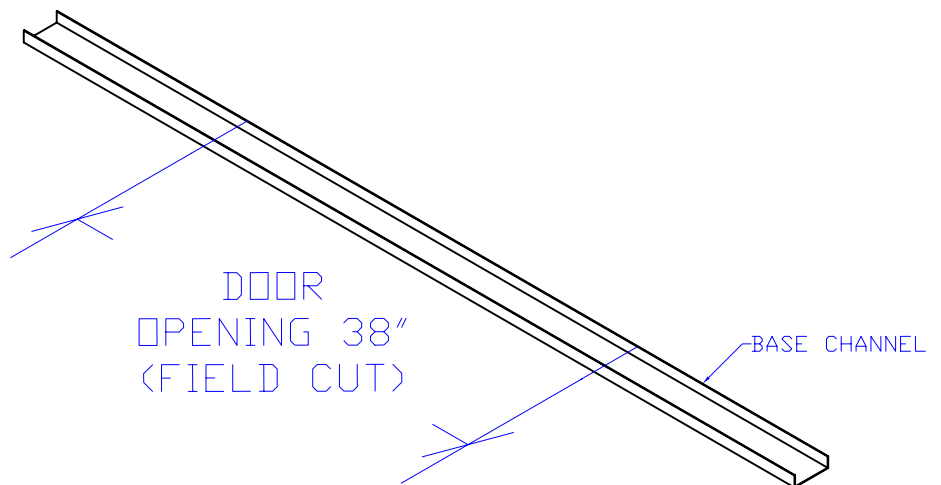
### Base Channel Installation

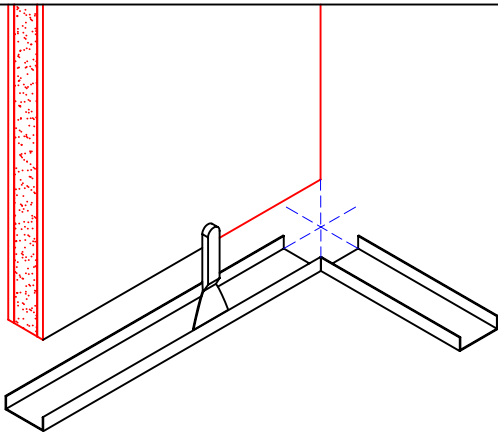
Included with your Panel-Built building are the required fasteners to attach the base channel securely to the floor.  $\frac{1}{4}$ " Nylon anchors for fastening to concrete floor, and #10 Phillips pan head screws for wood floors. Fasteners spaced every 18" on center.



### Door Placement

Locate position for door opening as outlined in your plans that were included with your Panel-Built Building. The opening required for proper door placement is 38" (3'-2") for all single door openings. It is recommended that the door cut out is not made until after the door panel is in its final position.

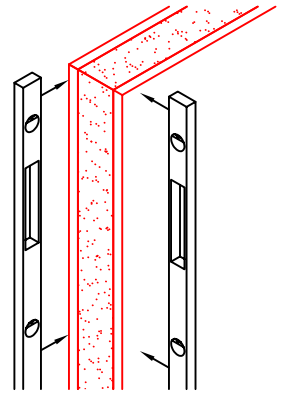




### Wall Panels

(Beginning 4-Wall)

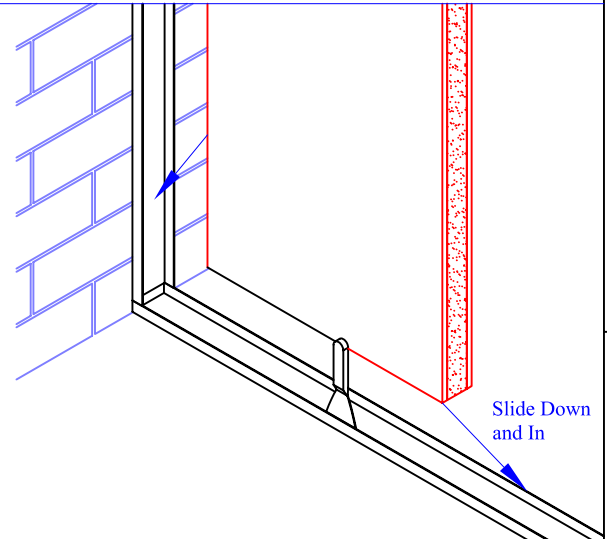
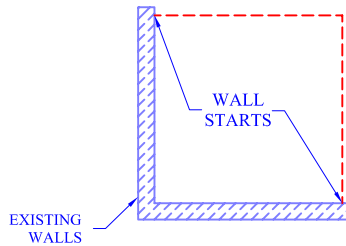
Start in the corner, install the first panel with edge even with interior corner point. The panel should be guided into the base channel using the putty knives. Plumb panel in both directions, and secure to base channel with #10 x 1 1/2" Pan Head Self Drilling Tek Screws. (provided)



Note: Butt interior corners of base channel as shown.

### 2 or 3 Wall Installation:

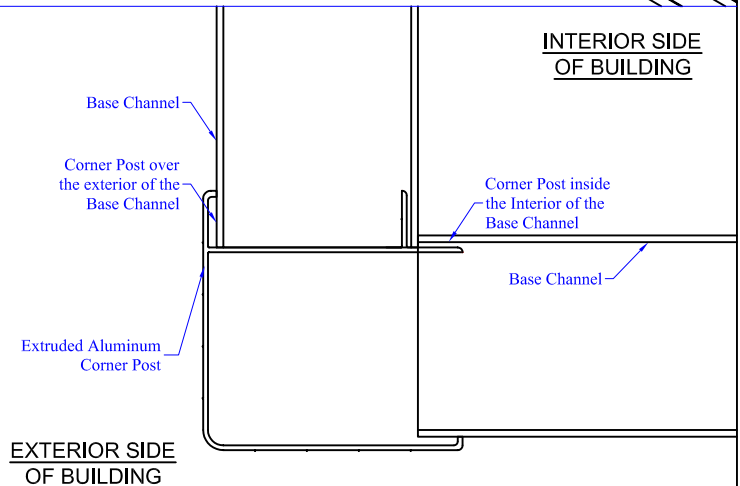
When starting from an existing wall. Attach wall starts to existing wall using either nylon anchors or #10 Pan Head screws. Ensure that wall starts are plumb prior to final fastening. Place panel into base channel and slide edge of panel into wall start.



### Installing Corner Post

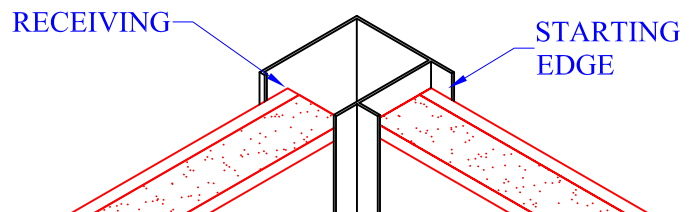
With the first panel in place, install corner post over edge of panel. You may want to use the putty knives to guide corner post onto panel. Fasten corner post, top and bottom using #10 x 1 1/2" Pan Head Self Drilling Tek Screws.

NOTE: Corner Post is a one piece extrusion designed to allow 3" of panel growth, if necessary.



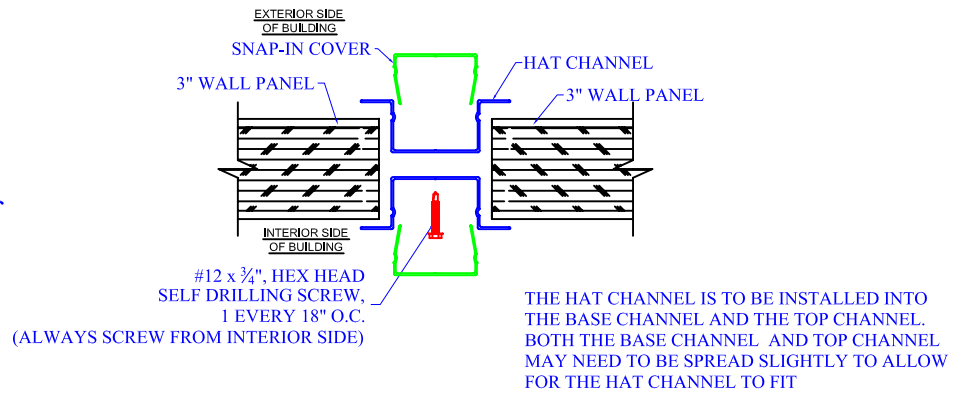
### CORNER POST ATTACHMENT

Place second panel in corner, ensure that it is plumb, make sure to check both panels for plumb. This will help in alignment and placement of following panels.



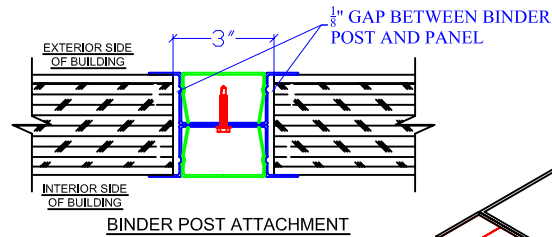
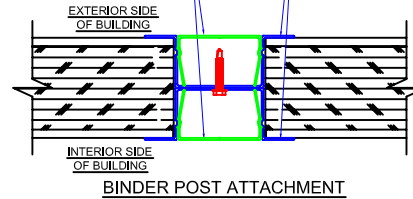
## Continuing Walls

With the starting corner panels in place, assemble the binder post dividers using the binder post hat channels. Secure the hat channels together using #12 x 3/4" hex head self drilling screws. Leave (2) binder post unassembled. **Do not** install the binder post snap-in covers until all panels are in place and wiring is installed. Reference the electrical details for methods on installing the snap-in covers. To continue the walls place one assembled binder post over the edge of the corner wall panel. Then slide the next panel into the edge of the binder post. Note that 1/8" space should be left between the panel edges and the binder posts.



THE SNAP-IN COVER IS TO BE INSTALLED DIRECTLY ON TOP OF THE BASE CHANNEL AND DIRECTLY UNDER THE TOP CHANNEL

MAKE CERTAIN TO ATTACH THE BASE & TOP CHANNELS TO THE HAT CHANNEL WITH THE SELF DRILLING SCREWS SUPPLIED WITH THIS PRODUCT

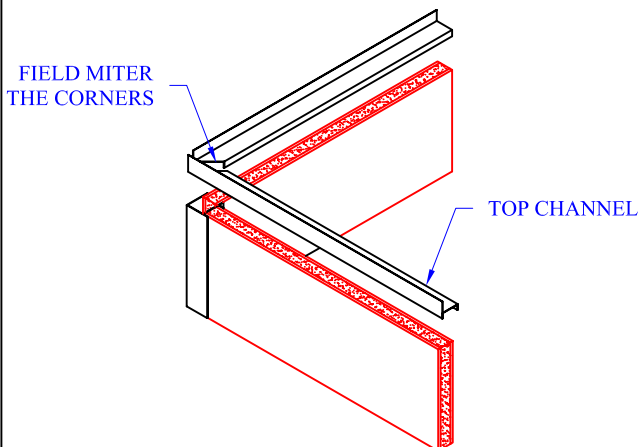
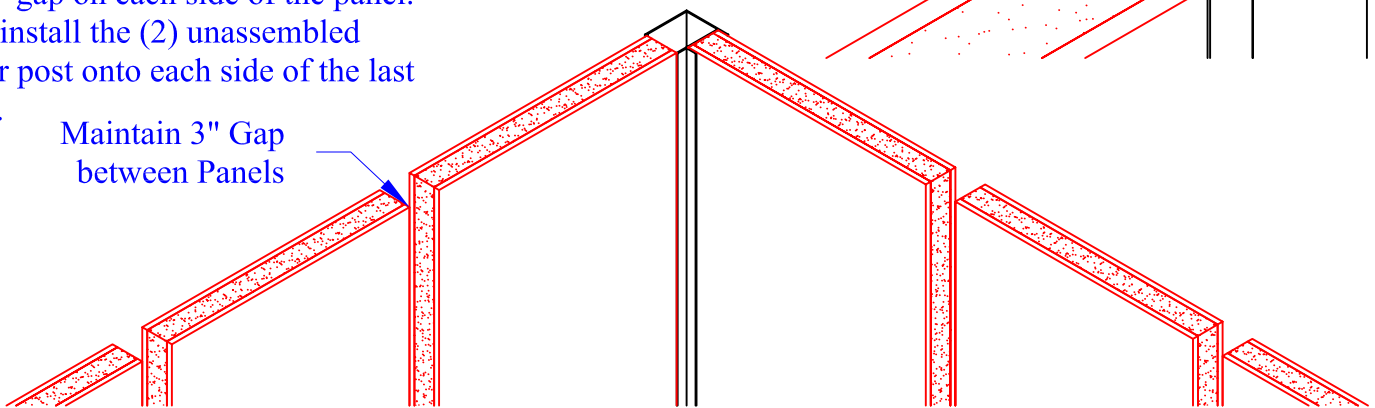


**WARNING:** DO NOT CUT (1) PIECE OF SNAP-IN COVER INTO MULTIPLE PIECES FOR GOING UNDER ELECTRICAL PREPS. THIS WILL RESULT IN A SHORTAGE OF SNAP-IN COVER MATERIAL. EACH SNAP-IN COVER IS TO BE INDIVIDUALLY CUT FOR EACH ELECTRICAL PREP.

## Completing Wall Installation

Stand the final panel into place in the base channel. Make certain that there is a 3" gap on each side of the panel. Then install the (2) unassembled binder post onto each side of the last panel.

Maintain 3" Gap between Panels



## Attaching Top Channel

After corner panels have been installed and checked for plumb (in all directions), place top channel in position over wall section. Fasten in place with #10 x 1 1/2" Pan Head Self Drilling Tek Screws.

### Installing Steel Roof Decking

In most installations the Steel Roof Decking will span the entire roof area, if not, please refer to the enclosed plans for a detailed description of placement of interior roof supports.

Position Steel Roof Decking on leading edge of the buildings with the flat side facing up. Position panel with the "short edge" being flush with both of the outside edges of the Top Channel. Install the binder top flashing (see detail) under the steel roof decking. This flashing will act as a trim piece to conceal the roof decking. The "long edge" is flush with the interior wall (See Detail) when squareness is assured. Fasten through Roof Decking into the Top Channel with #12 x 1 1/4 Hex Head screws, starting in the corner, and proceeding along the "long edge" approximately 12" apart.

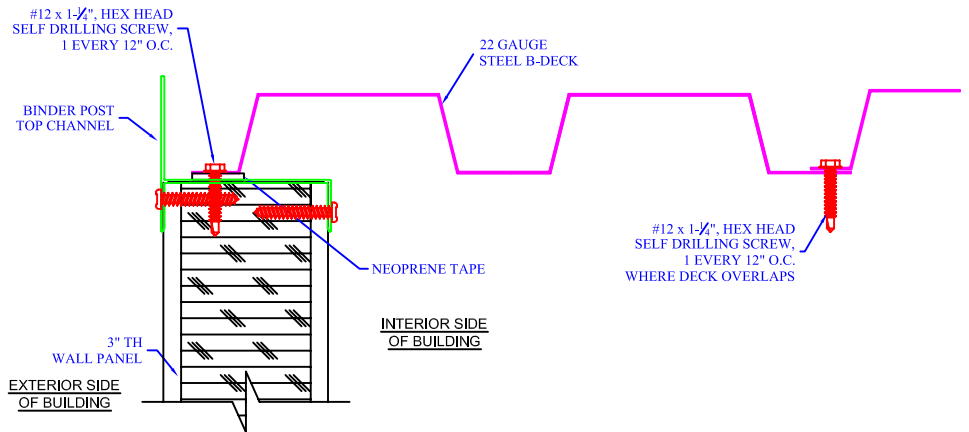
Note: Roof Decking is not pre-drilled for this procedure.

Ensure Squareness before fastening.

When the first decking panel is secured, attach the second and "mate" the outside edges to make an overlapping joint. Attach the joint from the inside up through the

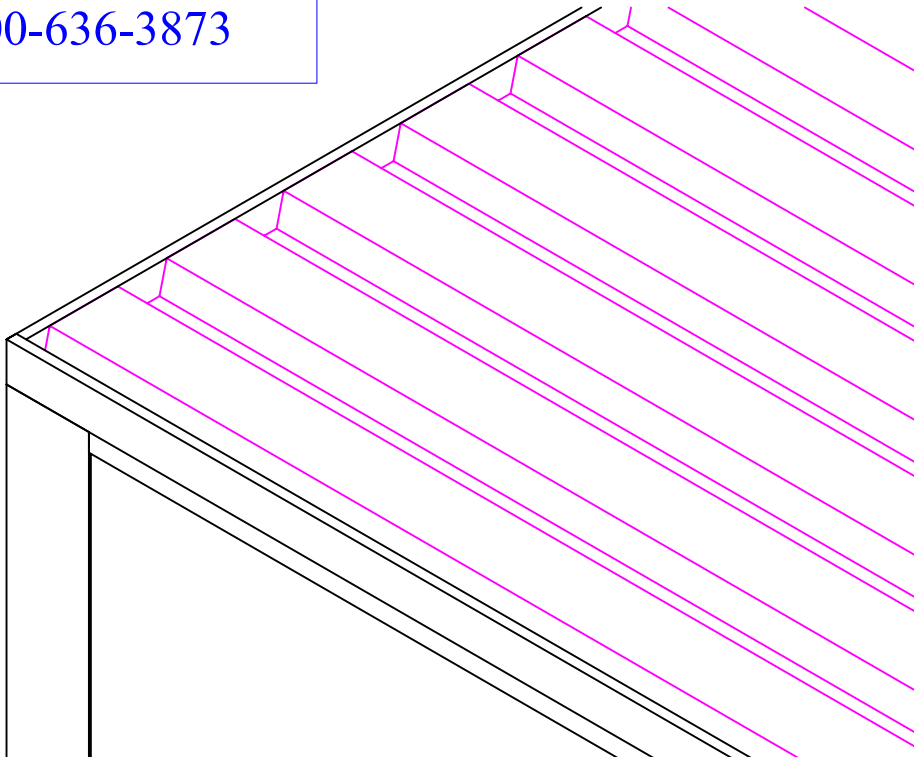
2 joining panels approximately 12" apart with #12 x 1 1/4 Hex Head Head screws

**Note:** This is a NON-LOAD bearing roof structure. It is not intended to be walked on or used as secondary storage space.



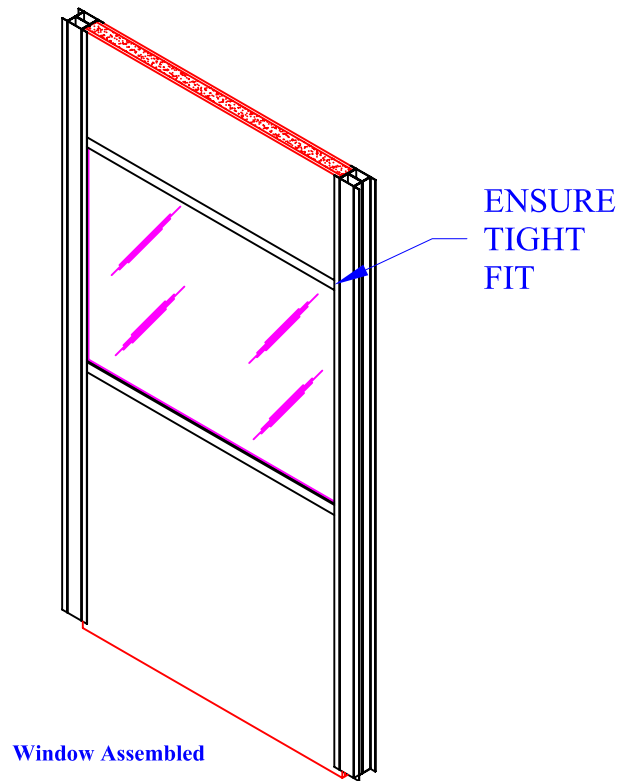
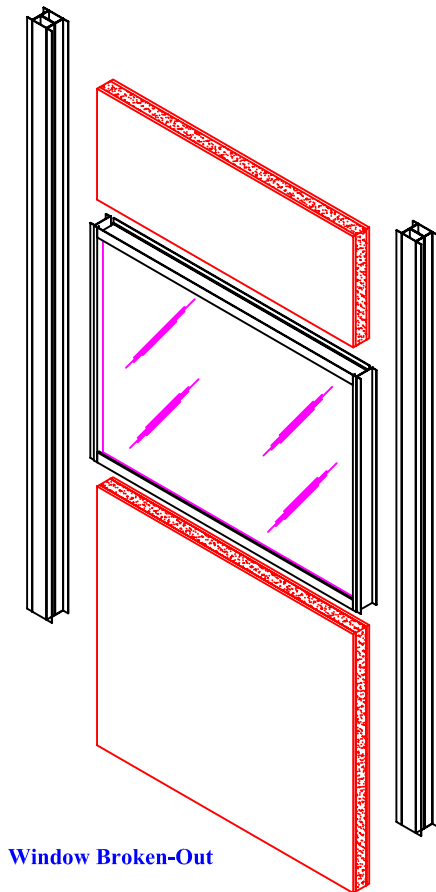
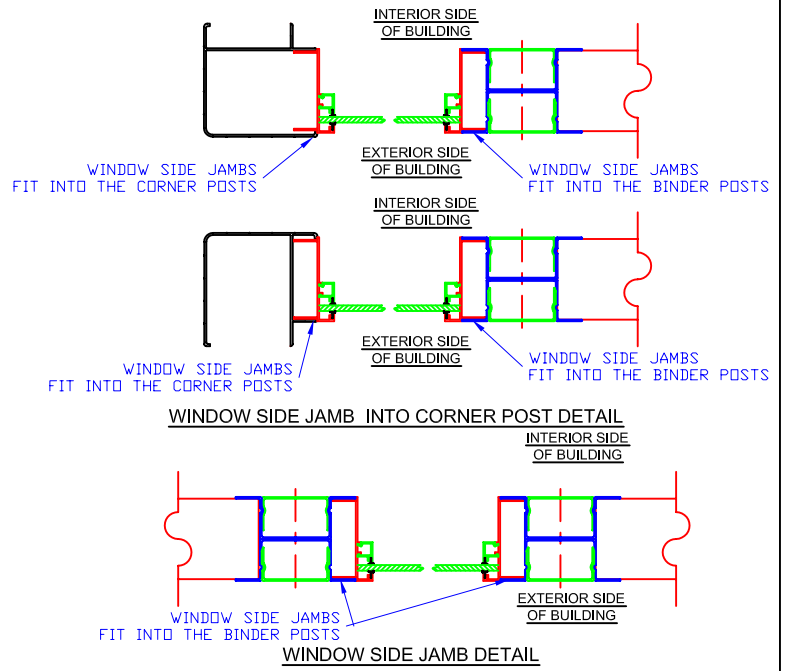
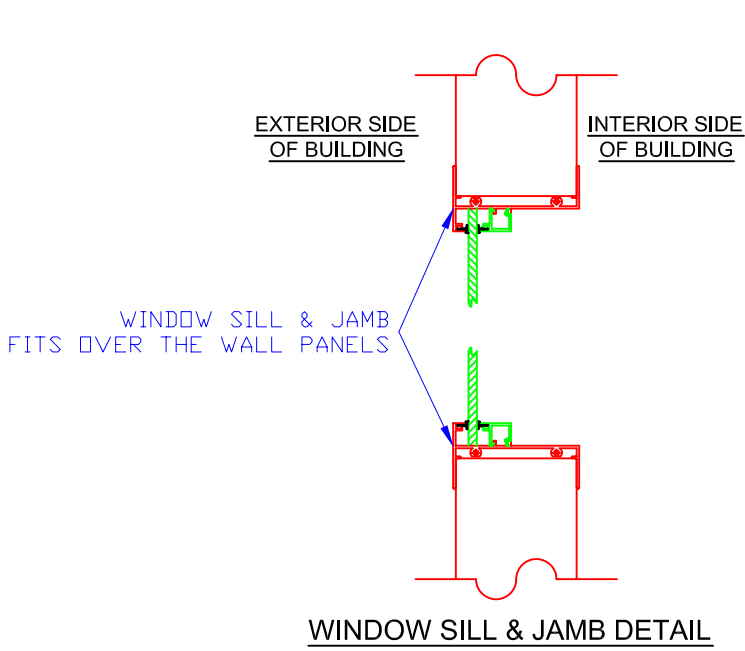
**NON-LOADBEARING B-DECK TO TOP CHANNEL ROOF SYSTEM**

Technical Assistance  
1-800-636-3873

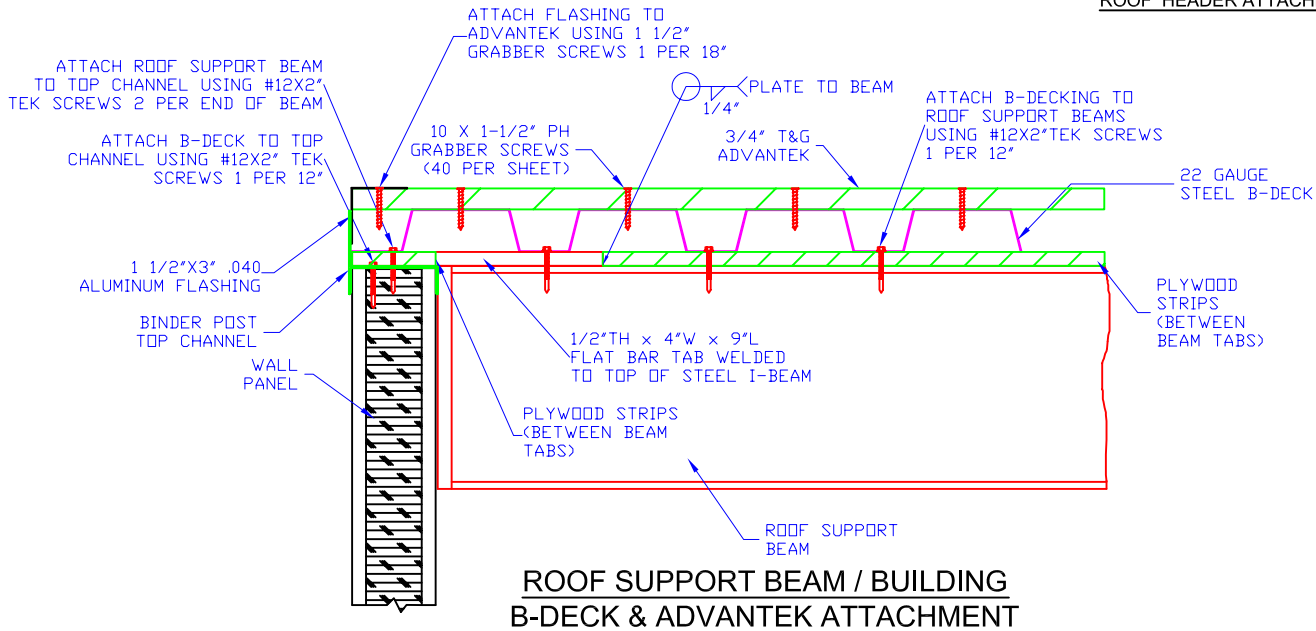
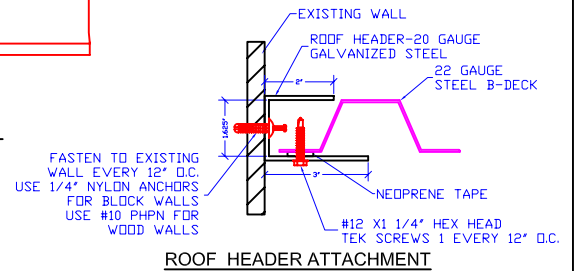
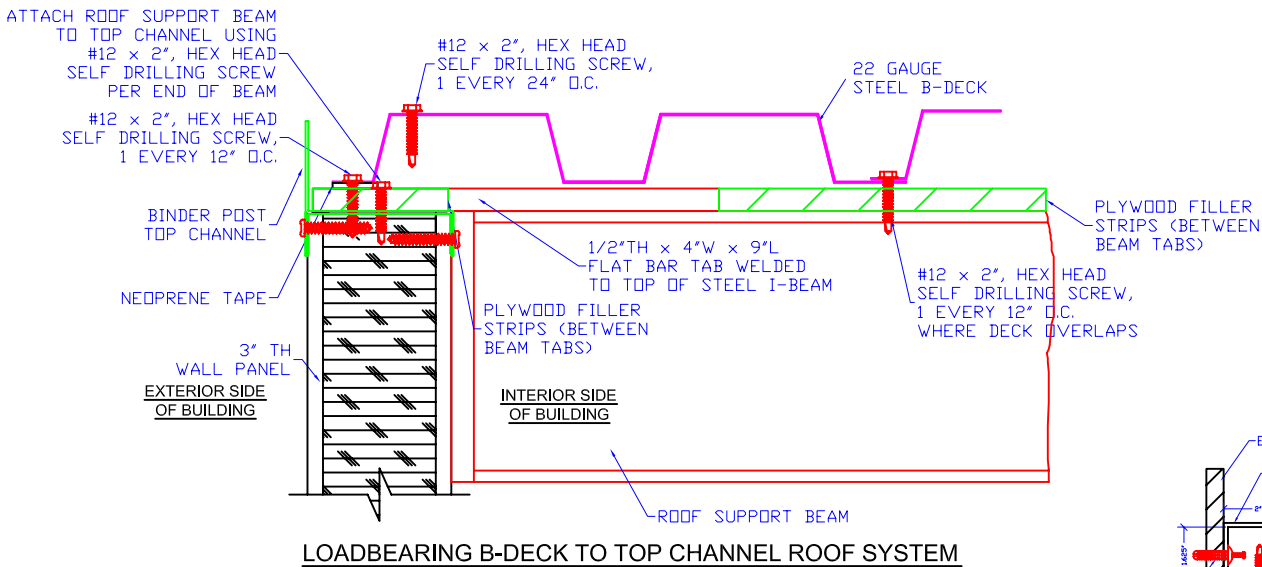
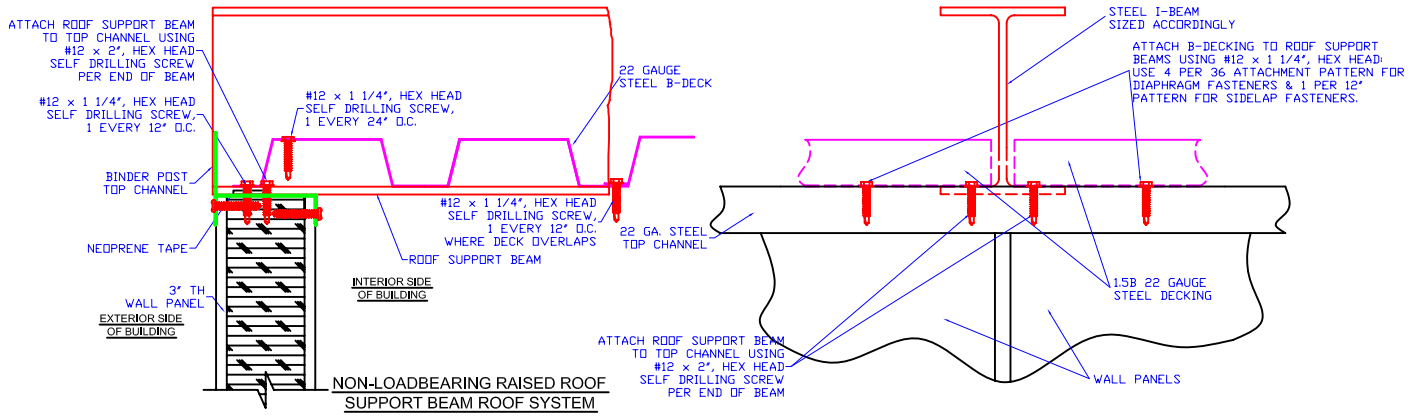


Continue attaching roof decking panels in the manner described, until all roof panels are in place. Secure panels #12 x 1 1/4" Hex Head Screws every 12".

# Window Installation Details



# Alternate Roof System Details

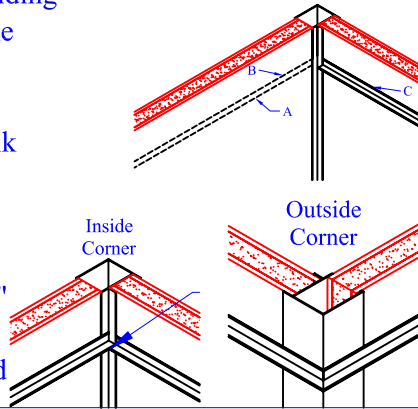




## Suspended Ceiling Installation

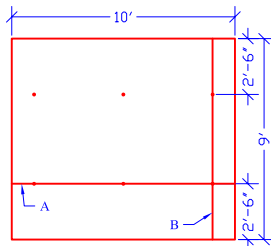
### STEP 1: Install Wall Molding

1. Mark height desired for new ceiling. (A)
2. Add height of wall molding and mark a LEVEL line around 3 walls. (B)
3. Snap a connecting chalk line on the 4th wall.
4. Screw wall molding to the wall studs. Using  $\frac{1}{2}$ " Grabber Screws, 1 per 12". (C) Provided



### Place Guide Strings

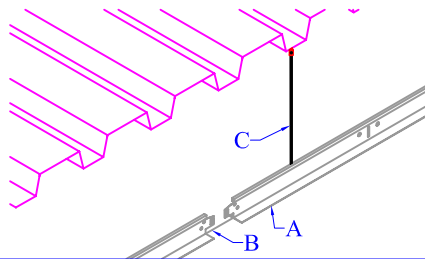
- Stretch Guide Strings and attach to the bottom of the Wall Molding.
- A. Main Beam Guide String at Border Panel distance.
  - B. Cross Tee Guide String at Border Panel distance.



NOTE: Strings must meet at a 90 deg. angle. Check with a framing square.

### Hang and Level Main Tees

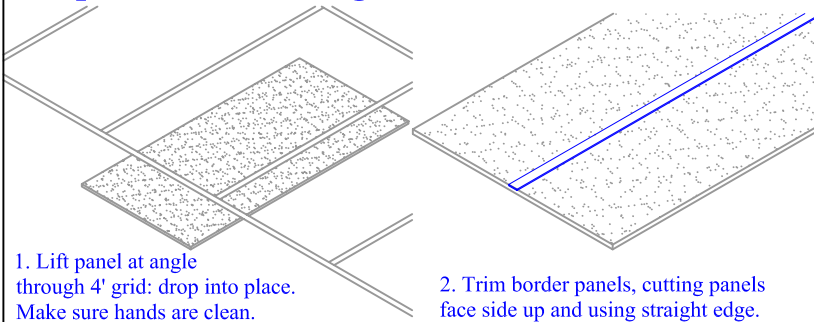
1. Install first Main Tees (A) at Guide (B) trimmed end on Wall Molding and other end hung on pre-bent wire.
2. To span room, connect Main Tees ends (Male-Female connection) every 12', support Main Tees with pre-bent wire.
3. Hang all Main Tees.



### Step 3: Install Ceiling Panels

1. Lift panel at angle through 4' grid: drop into place. Make sure hands are clean.

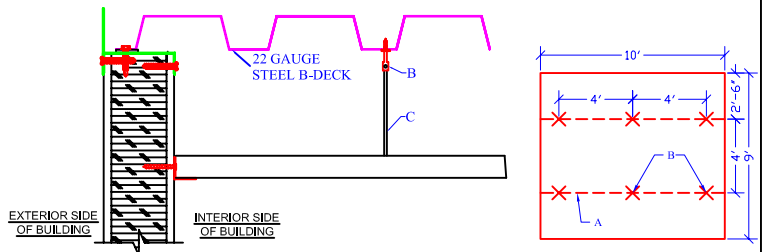
2. Trim border panels, cutting panels face side up and using straight edge.



## STEP 2: Install Suspension System Install Fasteners and Hanger Wires

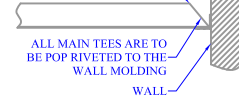
1. Snap Chalk Line for Main Beams 4' Apart (A).
2. Screw in Wire Fasteners, 4' Apart (B).
3. Wrap hanger wire securely around itself at least 3 times (C).

NOTES: Add extra wires for light fixtures, one at each corner of the light.  
Additional Hanger Wires and/or bracing may be required depending on the amount of seismic activity in your area. Check your local codes for additional information.



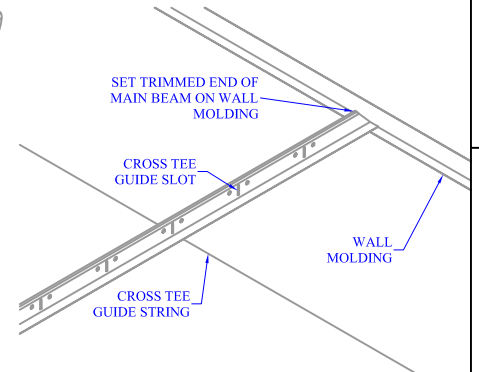
### Trim the Main Tee

CROSS TEE AND MAIN TEE TO BE CUT AT ANGLE WHERE IT RESTS ON WALL MOLDING



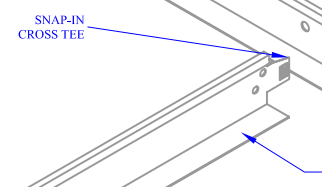
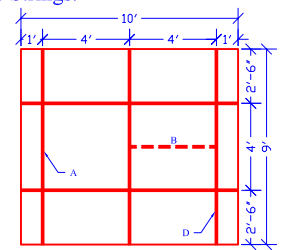
ALL MAIN TEES ARE TO BE POP RIVETED TO THE WALL MOLDING

Trim end of first Main Beam (A) so that a Cross Tee slot on the Main Beam aligns with Cross Tee Guide String.



### Install Cross Tees

1. Start at Guide String and install all 4' Cross Tees between Main Tees at 2' intervals (A). For 2'x2' panels, install 2' Cross Tees at midpoints of 4' Cross Tees (B). See illustrations (C) for Cross Tee installation techniques. Install some middle ceiling panels to square up the grid. The first Main Tee must be aligned with the Main Tee Guide String. Measure distance from the first Main Tee to the wall at the Cross Tee.
2. Trim Cross Tee and install. On opposite side of room, measure, trim, and install a Cross Tee (D).
3. Repeat process, alternating sides of the room, until all Cross Tees for border panels are in place. Remove Guide Strings.



# Standard Wiring Instructions

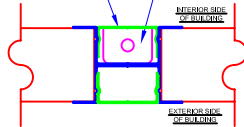
**NOTES:**

1. ELECTRICAL DEVICES CAN BE INSTALLED ON BOTH THE INTERIOR & EXTERIOR SIDES OF THE BINDER POST.
2. IN ORDER STACK MULTIPLE PREPS IN THE BINDER POST THE DEVICES MUST BE A MINIMUM OF 6" APART.
3. PANEL-BUILT DOES NOT RECOMMEND MORE THAT (2) DEVICES PER BINDER POST.
4. IN ORDER TO WIRE STACKED DEVICES SIMPLY DRILL THROUGH THE CENTER WEB OF THE BINDER POST AND FEED WIRE FROM THE LOWER DEVICE THROUGH THE HOLE. THE WIRE SHOULD BE PLACED IN THE BACK SIDE OF BINDER POST UNTIL THE WIRE IS ABOVE THE SECOND DEVICE. THEN DRILL A SECOND HOLE THROUGH THE WEB OF THE BINDER POST AND FEED THE WIRING BACK INTO INTERIOR SIDE OF THE BUILDING. NOTE: WIRING GROMMETS OR BUSHINGS SHOULD BE USED FOR HOLES CUT INTO THE WEB OF THE BINDER POST.

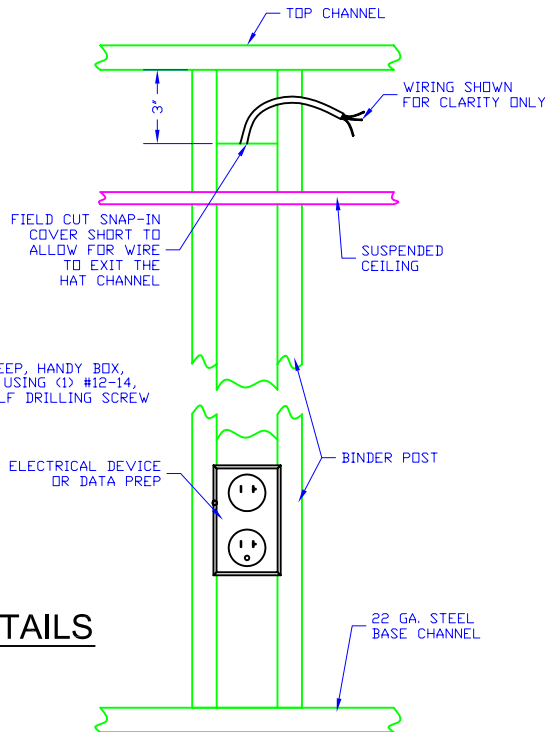
SNAP-IN COVER IS TO BE FIELD CUT AT AN ELECTRICAL DEVICE.

UTILIZE THE ELECTRICAL DEVICE COVER PLATE TO COVER THE CUT EDGES.

2"x4"x1-1/2" DEEP, HANDY BOX, INSTALL BOX USING (1) #12-14, HEX HEAD SELF DRILLING SCREW



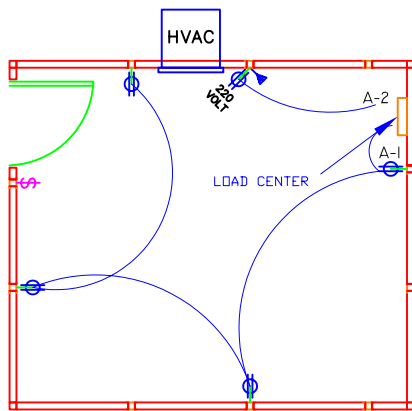
## ELECTRICAL DEVICE DETAILS



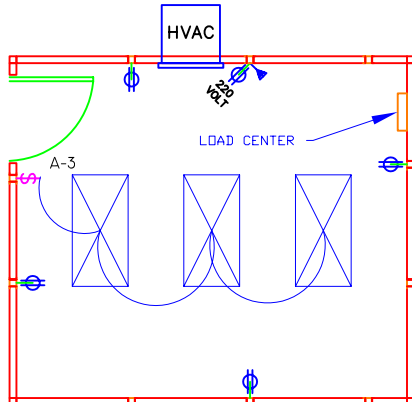
**WARNING:**

DO NOT CUT (1) PIECE OF SNAP-IN COVER INTO MULTIPLE PIECES FOR GOING UNDER ELECTRICAL PREPS. THIS WILL RESULT IN A SHORTAGE OF SNAP-IN COVER MATERIAL. EACH SNAP-IN COVER IS TO BE INDIVIDUALLY CUT FOR EACH ELECTRICAL PREP.

# Modular Wiring Instructions

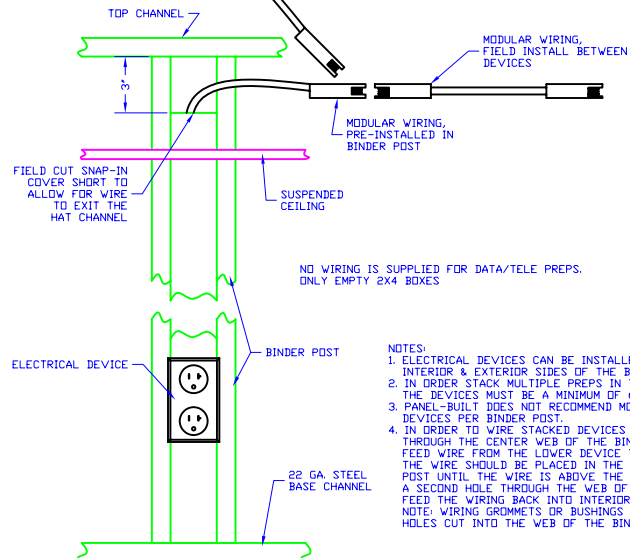


RECEPTACLE WIRING LAYOUT



LIGHTING WIRING LAYOUT

MODULAR WIRING FROM LOAD CENTER, REFER TO THE MODULAR WIRING LAYOUT TO LOCATE WHICH OUTLET THIS NEEDS TO ATTACH TO



**NOTES:**

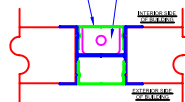
1. ELECTRICAL DEVICES CAN BE INSTALLED ON BOTH THE INTERIOR & EXTERIOR SIDES OF THE BINDER POST.
2. IN ORDER STACK MULTIPLE PREPS IN THE BINDER POST THE DEVICES MUST BE A MINIMUM OF 6" APART.
3. PANEL-BUILT DOES NOT RECOMMEND MORE THAT (2) DEVICES PER BINDER POST.
4. IN ORDER TO WIRE STACKED DEVICES SIMPLY DRILL THROUGH THE CENTER WEB OF THE BINDER POST AND FEED WIRE FROM THE LOWER DEVICE THROUGH THE HOLE. THE WIRE SHOULD BE PLACED IN THE BACK SIDE OF BINDER POST UNTIL THE WIRE IS ABOVE THE SECOND DEVICE. THEN DRILL A SECOND HOLE THROUGH THE WEB OF THE BINDER POST AND FEED THE WIRING BACK INTO INTERIOR SIDE OF THE BUILDING. NOTE: WIRING GROMMETS OR BUSHINGS SHOULD BE USED FOR HOLES CUT INTO THE WEB OF THE BINDER POST.

**WARNING:**

DO NOT CUT (1) PIECE OF SNAP-IN COVER INTO MULTIPLE PIECES FOR GOING UNDER ELECTRICAL PREPS. THIS WILL RESULT IN A SHORTAGE OF SNAP-IN COVER MATERIAL. EACH SNAP-IN COVER IS TO BE INDIVIDUALLY CUT FOR EACH ELECTRICAL PREP.

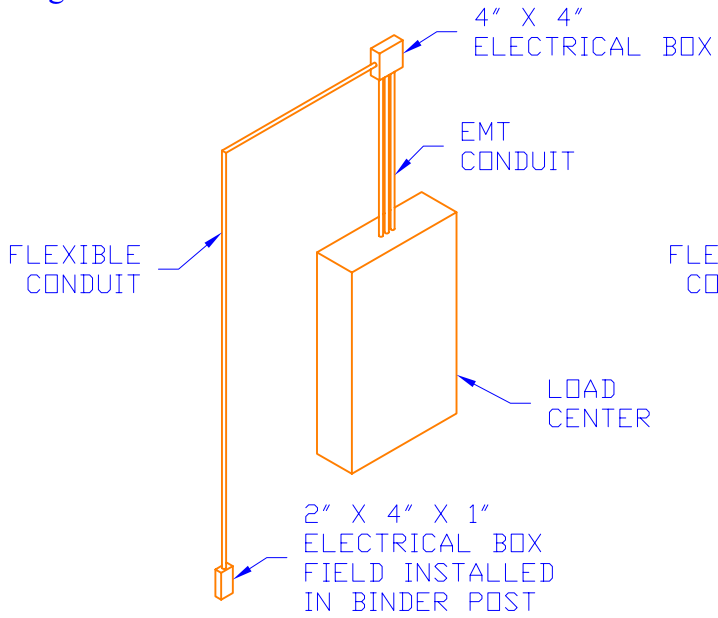
SNAP-IN COVER IS TO BE CUT AT AN ELECTRICAL DEVICE. UTILIZE THE ELECTRICAL DEVICE COVER PLATE TO COVER THE CUT EDGES.

2"x4"x1-1/2" DEEP, HANDY BOX, BOX IS INSTALLED USING (1) #12-14, HEX HEAD SELF DRILLING SCREW

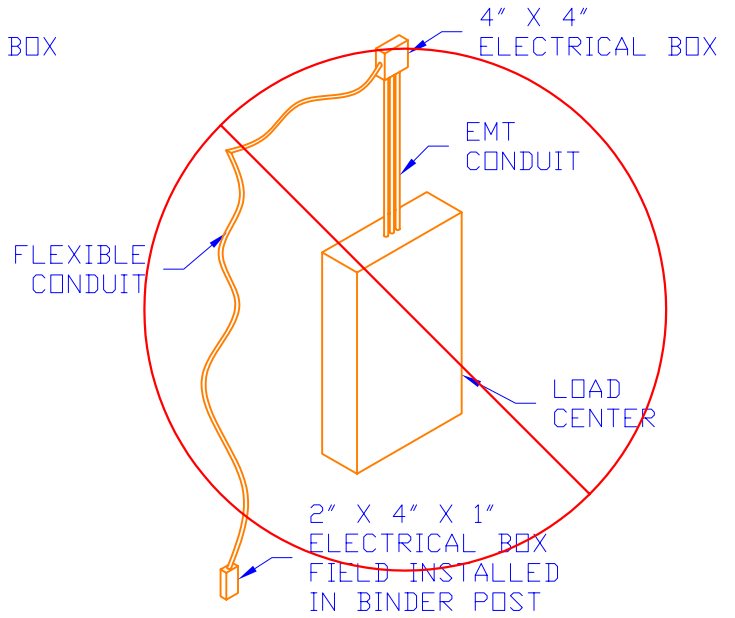


## ELECTRICAL DEVICE DETAILS FOR MODULAR WIRING

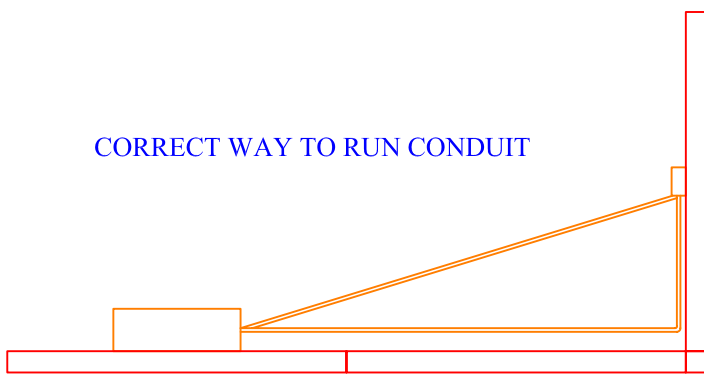
# Wiring Details



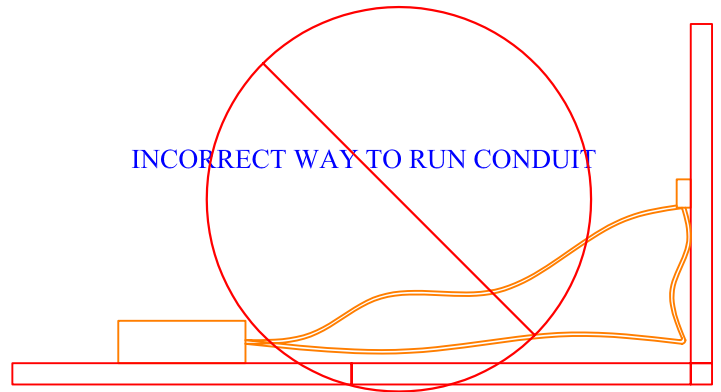
CORRECT WAY TO RUN CONDUIT



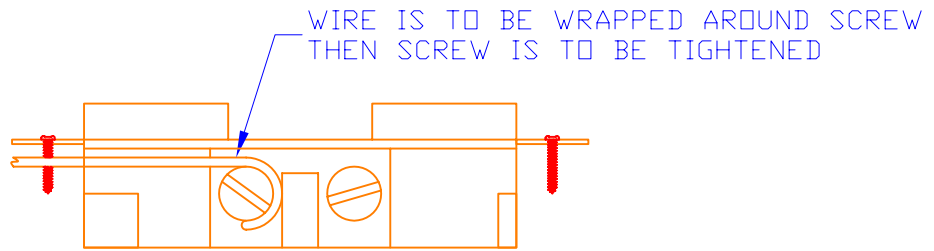
INCORRECT WAY TO RUN CONDUIT



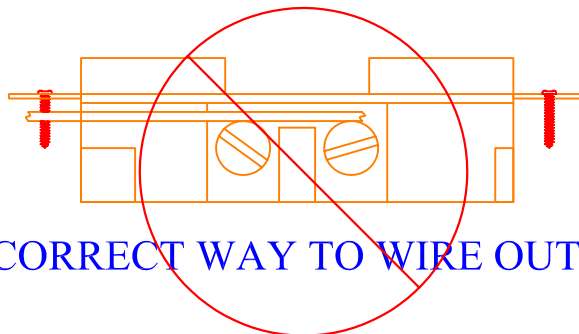
CORRECT WAY TO RUN CONDUIT



INCORRECT WAY TO RUN CONDUIT



CORRECT WAY TO WIRE OUTLET

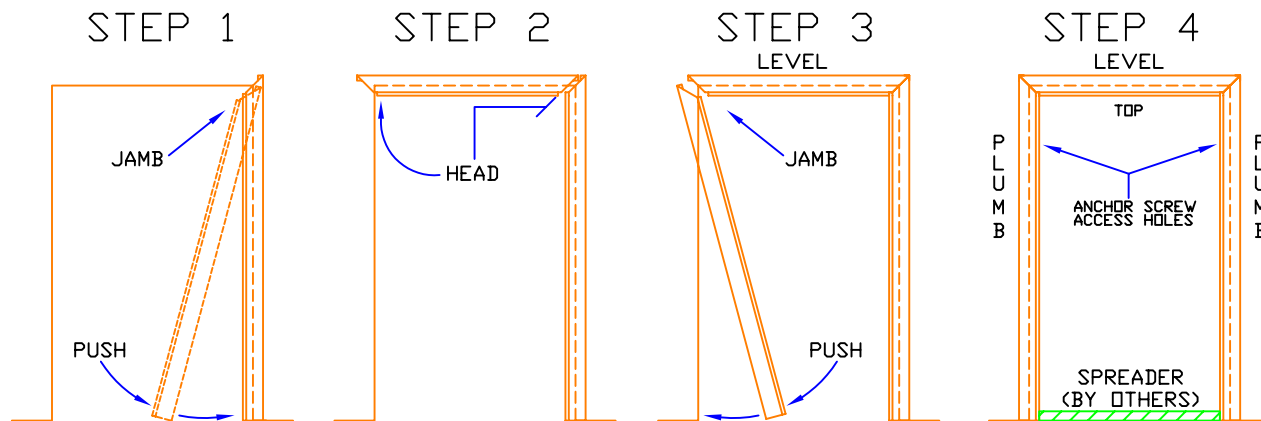
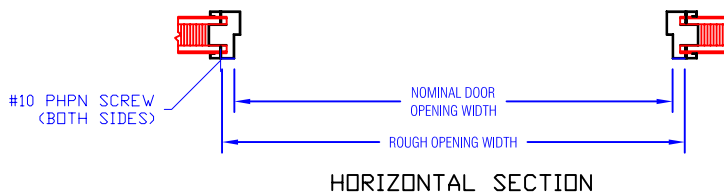
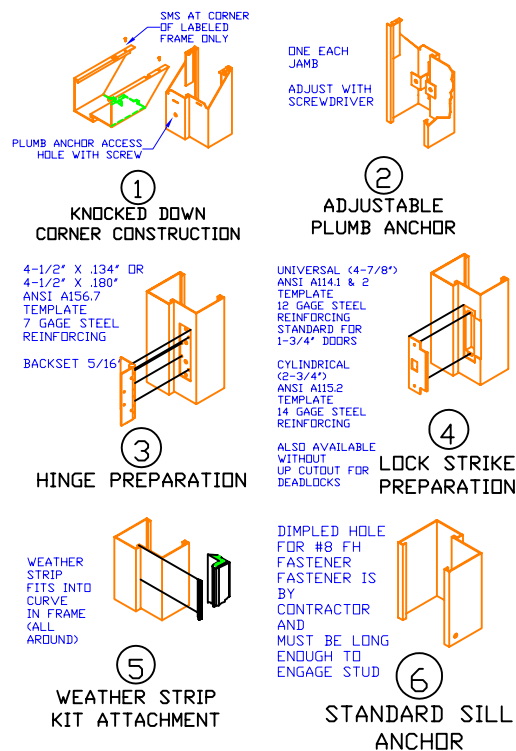
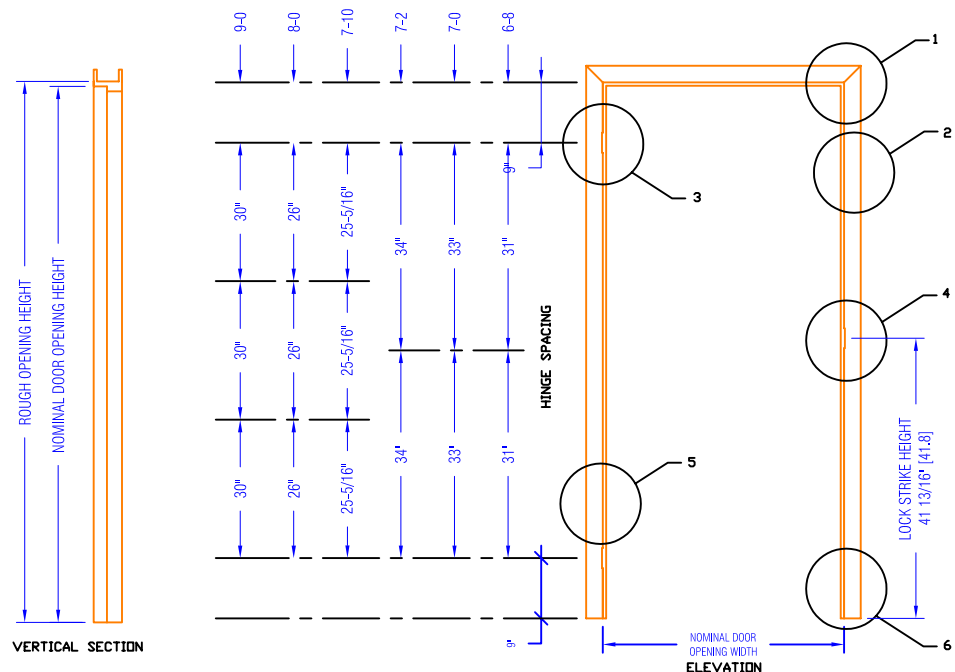


INCORRECT WAY TO WIRE OUTLET

# INSTALLATION INSTRUCTIONS FOR KNOCK DOWN DOORS

ROUGH OPENING: SINGLE RABBET  
 DOOR OPENING WIDTH PLUS 2"  
 DOOR OPENING HEIGHT PLUS 3/4"

Hardware locations shown match DOMINION standard doors  
 Single rabbet profiles are shown, double rabbet and  
 cased opening profiles are similar.



- |   |   |  |   |
|---|---|--|---|
| <p>A. PUSH TOP OF ONE JAMB OVER THE WALL.</p> <p>B. HOLD TOP OF JAMB IN PLACE. THEN PUSH BOTTOM IN TOWARDS AND OVER WALL.</p> | <p>A. POSITION FRAME HEAD OVER THE WALL.</p> <p>B. ALIGN HEAD TABS WITH JAMB SLOTS, THEN SLIDE HEAD TOWARD JAMB AND ENGAGE TABS IN SLOTS.</p> | <p>A. PUSH TOP OF REMAINING JAMB OVER WALL AND MATE TABS IN SLOTS.</p> <p>B. PUSH BOTTOM OF JAMB IN TOWARDS AND OVER WALL.</p> <p>C. LEVEL HEAD.</p> | <p>A. ADJUST PLUMB ANCHORS WITH SCREWDRIVER.</p> <p>B. PLUMB HINGE JAMB AND ANCHOR SILL.</p> <p>C. WITH TEMPORARY SPREADER, ADJUST STRIKE JAMB AND ANCHOR SILL.</p> <p>D. INSTALL MUTES.</p> <p>F. SPREADER IS NOT SUPPLIED BUT IT IS RECOMMENDED THAT ONE IS USED TO MAKE PLUMBING OF SIDE JAMBS EASIER.</p> |
|---|---|--|---|